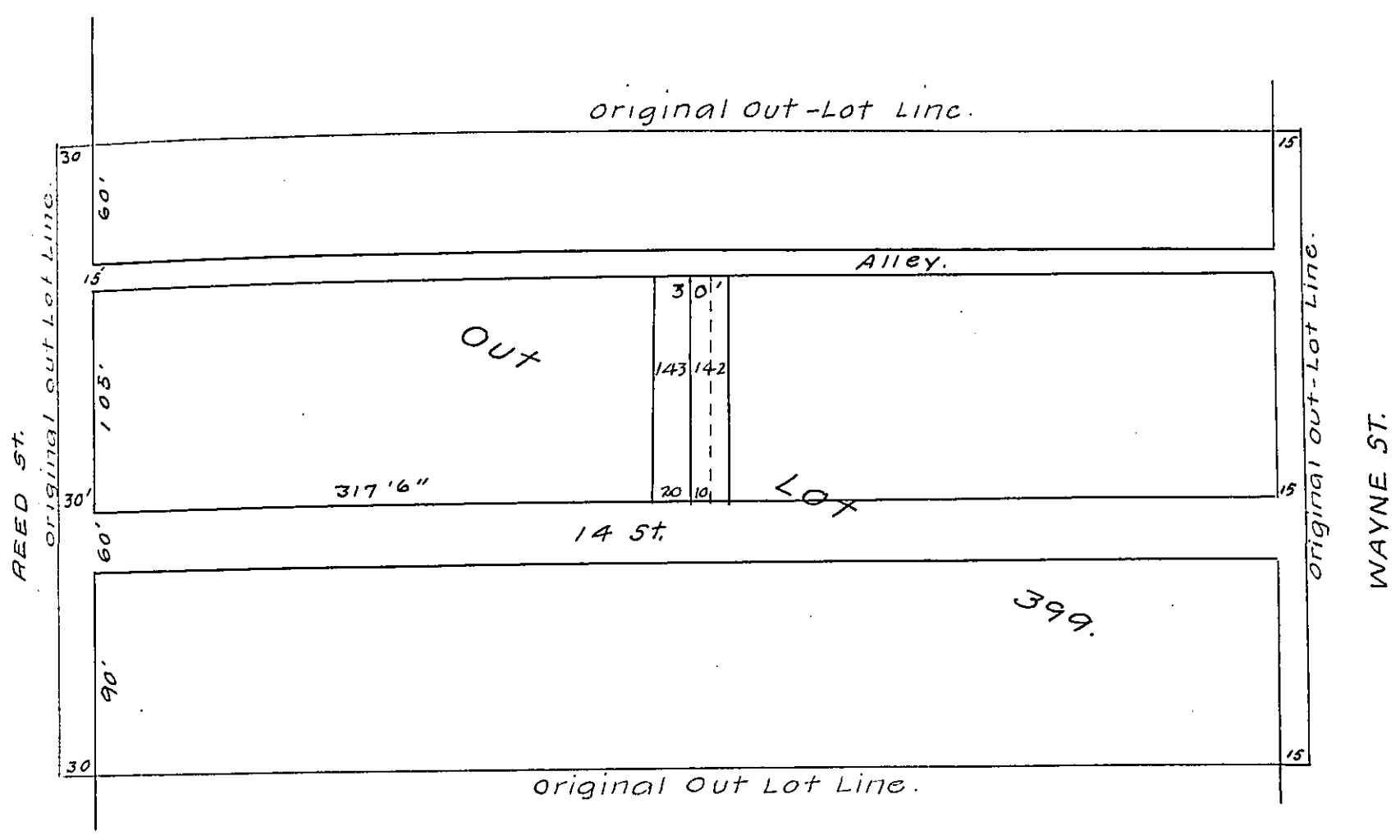


FORM NO. 1.



N.B. Black lines indicate streets and alleys as they appear to-day. The piece of ground for which a patent is desired, to wit lot 143 and West 1/2 of lot 142, begins at a point in the North line of 14th. st. 317'6" East of the East line of Reed Street (and 347'6" from the original West line of Out Lot 399); thence North 105' to an alley; thence <sup>East</sup> 30' to a point; thence South 105' to 14<sup>th</sup> st.; thence West 30' to beginning.

Patent to Antoni Wulff and <sup>Martha</sup> ~~Eliza~~ Wulff, his wife.

IN TESTIMONY that the above is a copy of the original remaining on file in the Department of Internal Affairs of Pennsylvania, made conformably to an Act of Assembly approved the 16th day of February 1833, I have hereunto set my hand and caused the Seal of said Department to be affixed at Harrisburg, this twelfth day of August, 1907.

*Alvery Bouck*  
Secretary of Internal Affairs.